



Beautify Lunada Bay
phase 2

+ Concept

Continuation of north side path and plantings

Before



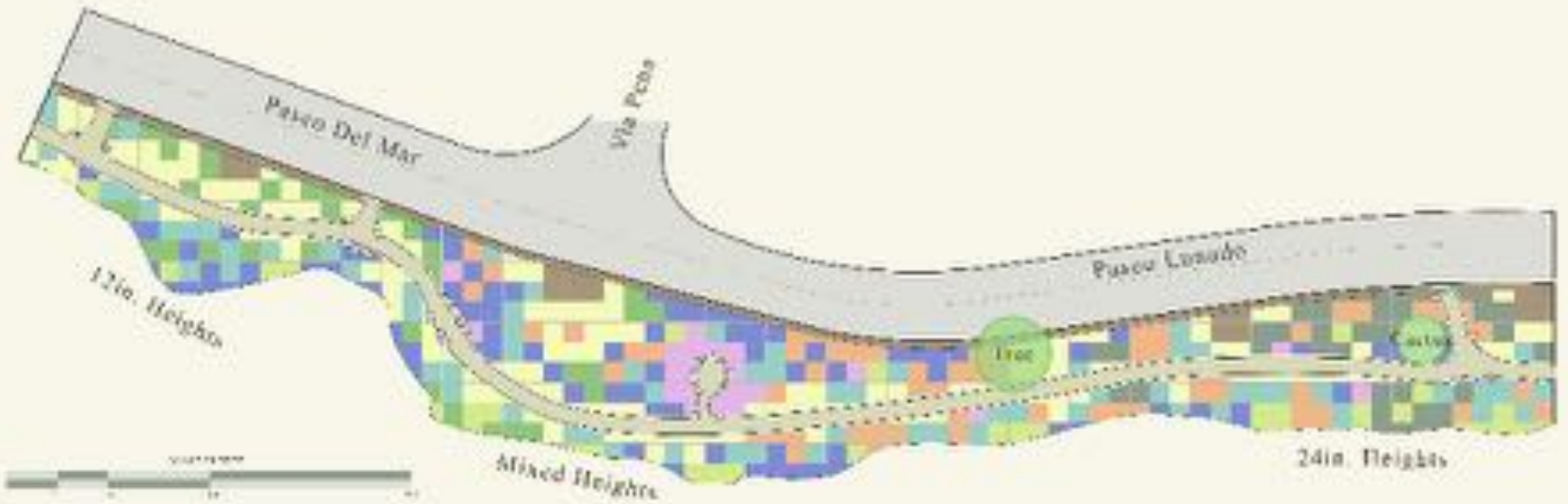
After



Location



Planting Plan



Opuntia Palette
 Opuntia
 Echinocactus
 Opuntia
 Opuntia

Artemisia Palette
 Artemisia
 Artemisia
 Artemisia
 Artemisia

Grassy Palette
 Grass
 Grass
 Grass
 Grass

Eriogonum Palette
 Eriogonum
 Eriogonum
 Eriogonum
 Eriogonum

Fragrant Palette
 Fragrant
 Fragrant
 Fragrant
 Fragrant

Salvia Mellicena Palette
 Salvia
 Salvia
 Salvia
 Salvia

Conoclinium Palette
 Conoclinium
 Conoclinium
 Conoclinium
 Conoclinium

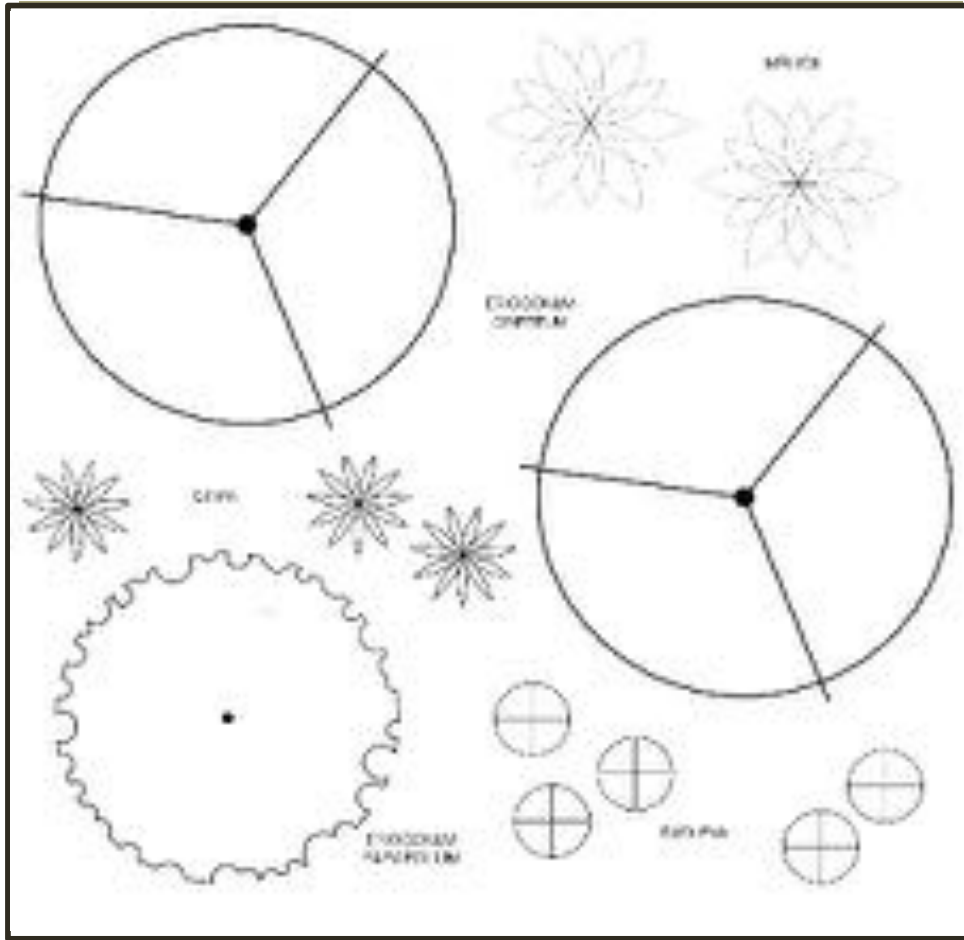
Baccharis Palette
 Baccharis
 Baccharis
 Baccharis
 Baccharis



Plant List

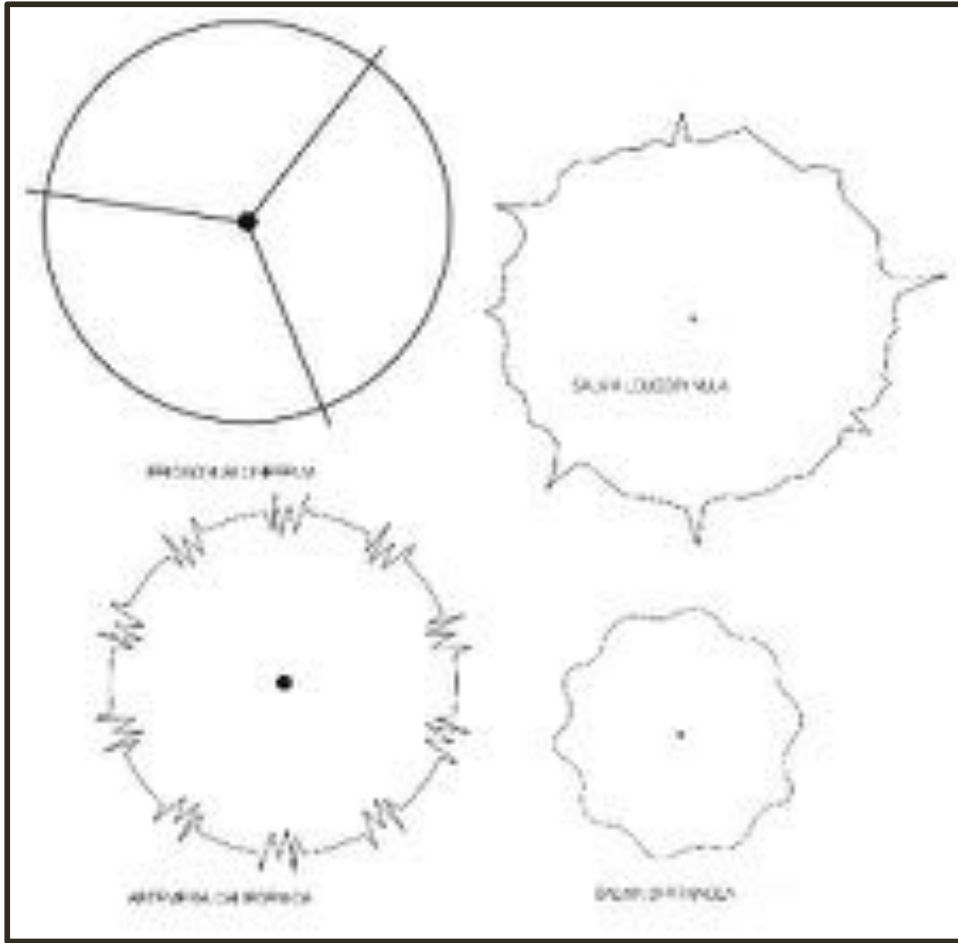


Symbol	Quantity	Size	Botanical Name	Common Name	HxW
	118	1 gal	<i>Adenostema fasciculatum</i> 'Nicholas'	Chamise "Nicholas"	1'x 3'-5'
	31	1 gal	<i>Baccharis pilularis</i> 'Pigeon Point'	Coyote Brush	1'x 5'
	173	1 gal	<i>Ceanothus</i> 'Centennial' or 'Point Reyes'	Wild Lilac	1'x 4'-5'
	1,265	1 gal	<i>Stipa lepida</i>	Foothill Needlegrass	2'x 2'
	1,597	1 gal	<i>Melica imperfecta</i>	Smallflower Melic	1'- 3' x 2'
	300	1 gal	<i>Sisyrinchium bellum</i>	Western Blue-eyed Grass	1'x 1'
	244	1 gal	<i>Artemesia californica</i> 'Canyon Gray'	California Sagebrush	1'x 5'
	120	1 gal	<i>Achillea millefolium</i>	Yarrow	1'-2'x 2'-3'
	275	1 gal	<i>Dudleya virens</i> ssp. <i>Insularis</i>	Chalk Liveforever	1'x 1'
	79	1 gal	<i>Eriogonum parvifolium</i>	Cliff Buckwheat	2'x 4'
	126	1 gal	<i>Eriogonum cinereum</i>	Ashy Leaf Buckwheat	2'x 5'
	40	1 gal	<i>Asclepias fascicularis</i>	Narrow Leaf Milkweed	2'x 4'
	30	1 gal	<i>Salvia mellifera</i> 'tera seca' (repens)	Dry Earth Black Sage	2'x 5'
	20	1 gal	<i>Salvia leucophylla</i>	Purple Sage	3'-4'x 4'-6'
	3	1 gal	<i>Eriogonum elongatum</i> var. <i>elongatum</i>	Longstem Buckwheat	4'x 2'
	26	1 gal	<i>Opuntia oricola</i>	Chaparral Prickly Pear	2'-3'x 3'-6'
	116	1 gal	<i>Verbena lilacina</i> 'De la Mina'	Lilac Verbena	2'-3'x 4'
	217	1 gal	<i>Eschscholiza californica</i>	California Poppy	1'x 1'
	86	1 gal	<i>Mirabilis laevis</i> var. <i>crassifolia</i>	Wishbone Bush	2'x 3'-4'
	20	1 gal	<i>Salvia spathacea</i>	Hummingbird Sage	2'x 3'
	15	1 gal	<i>Epilobium canum</i>	California Fuchsia	1'x 4'
Total	4,901				



Eriogonum Palette

Eriogonum cinereum
Eriogonum parvifolium
Melica imperfecta
Stipa lepida
Dudleya virens insularis



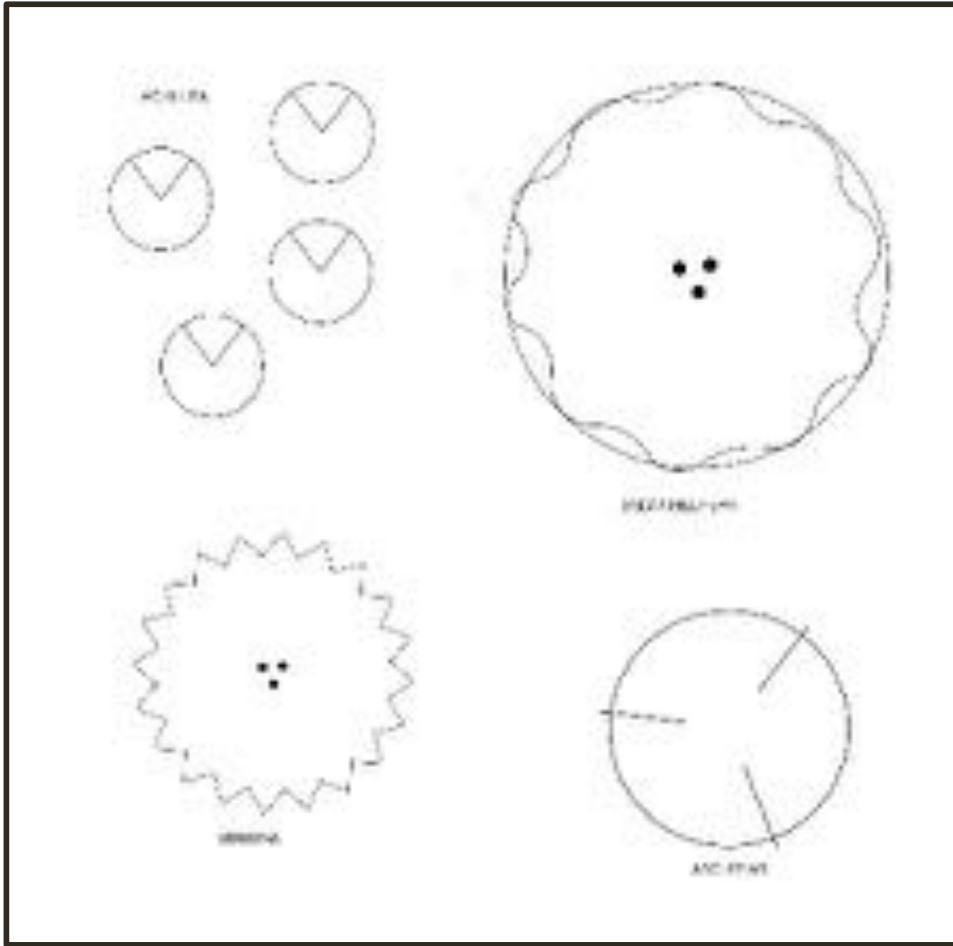
Fragrant Palette

Salvia Leucophylla

Salvia Spathacea

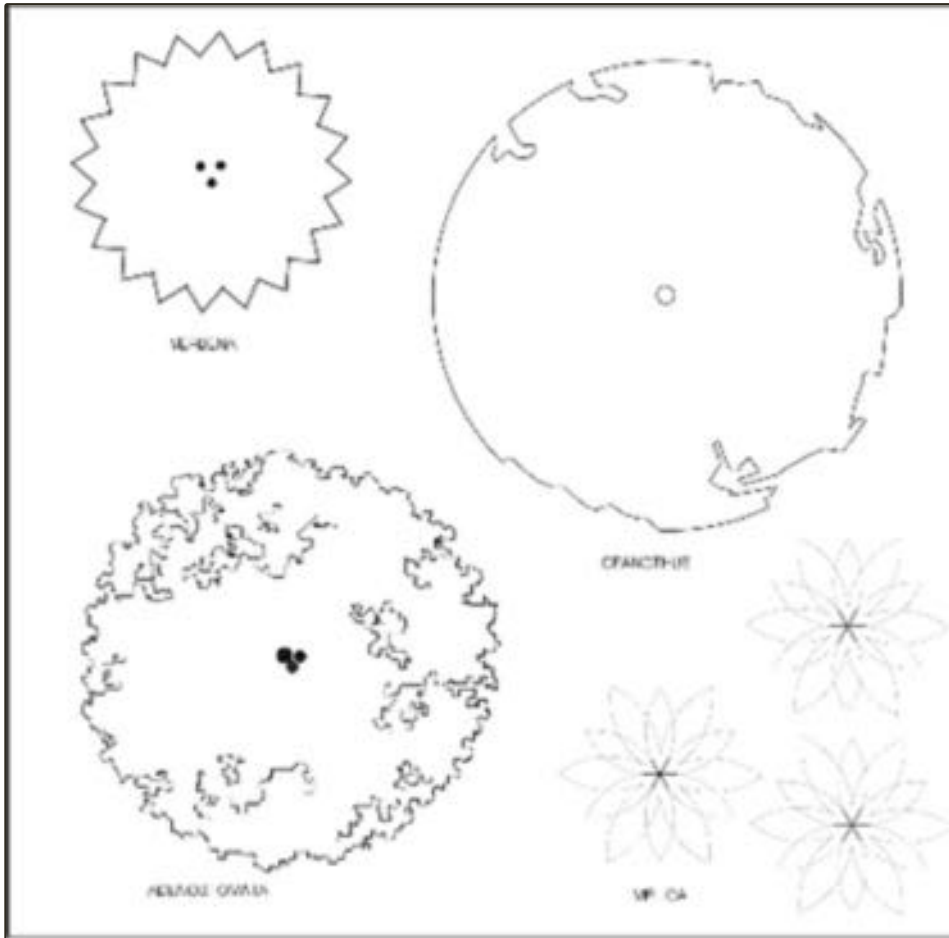
Eriogonum Cinereum

Artemesia Californica "Canyon Gray"



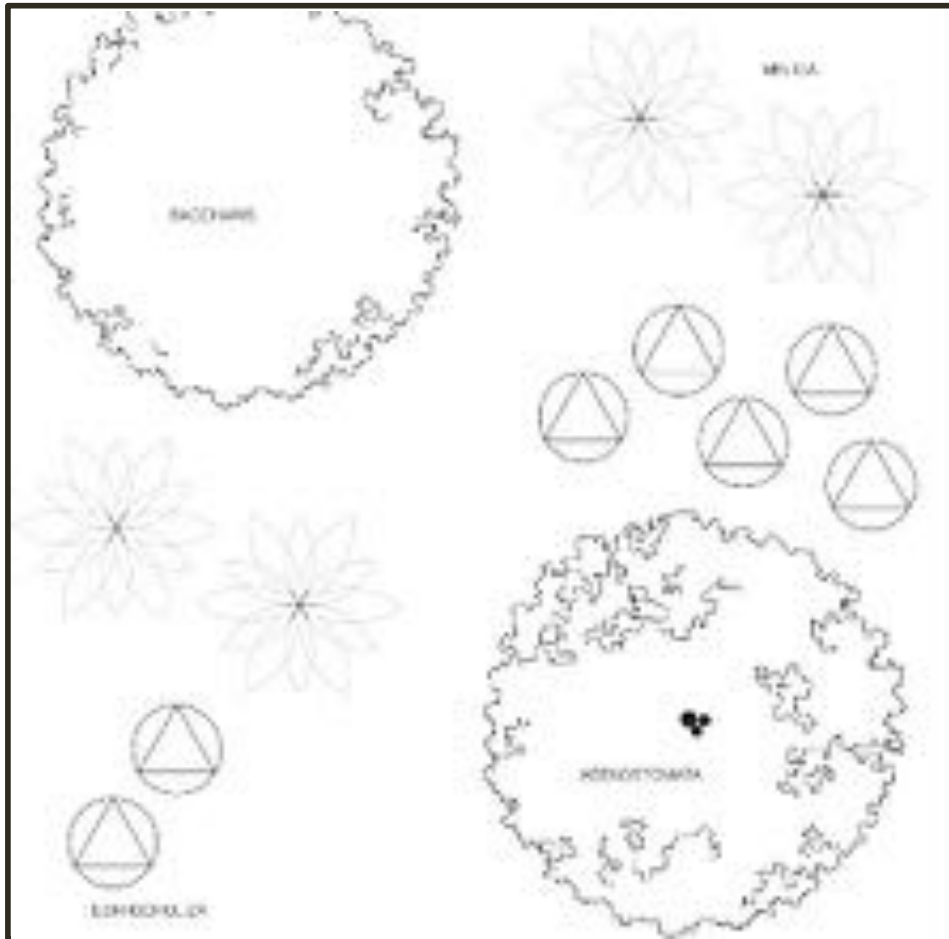
Salvia Mellifera Palette

Salvia Mellifera Repens
 Verbena Lilacina "De La Mina"
 Asclepias Fascicularis
 Achillea Millefolium



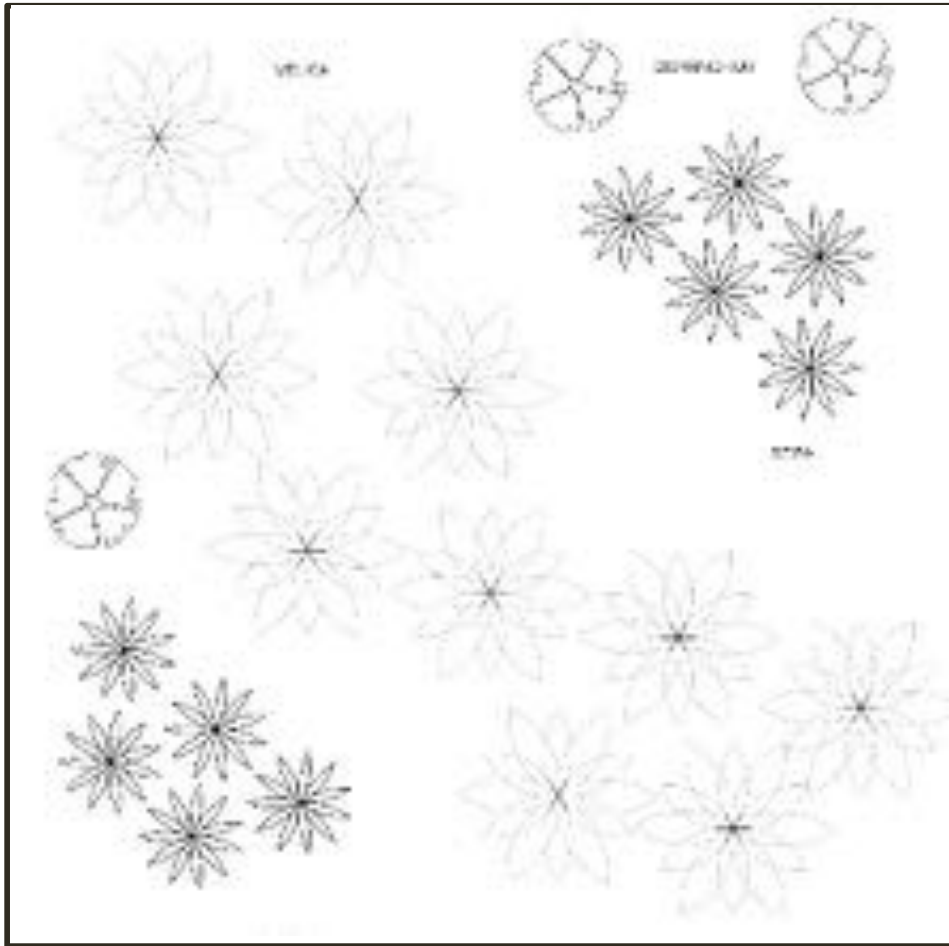
Ceanothus Palette

Ceanothus Centennial & Point Reyes
 Adenostomata "Nicholas"
 Melica Imperfecta
 Verbena Lilacina "De La Mina"



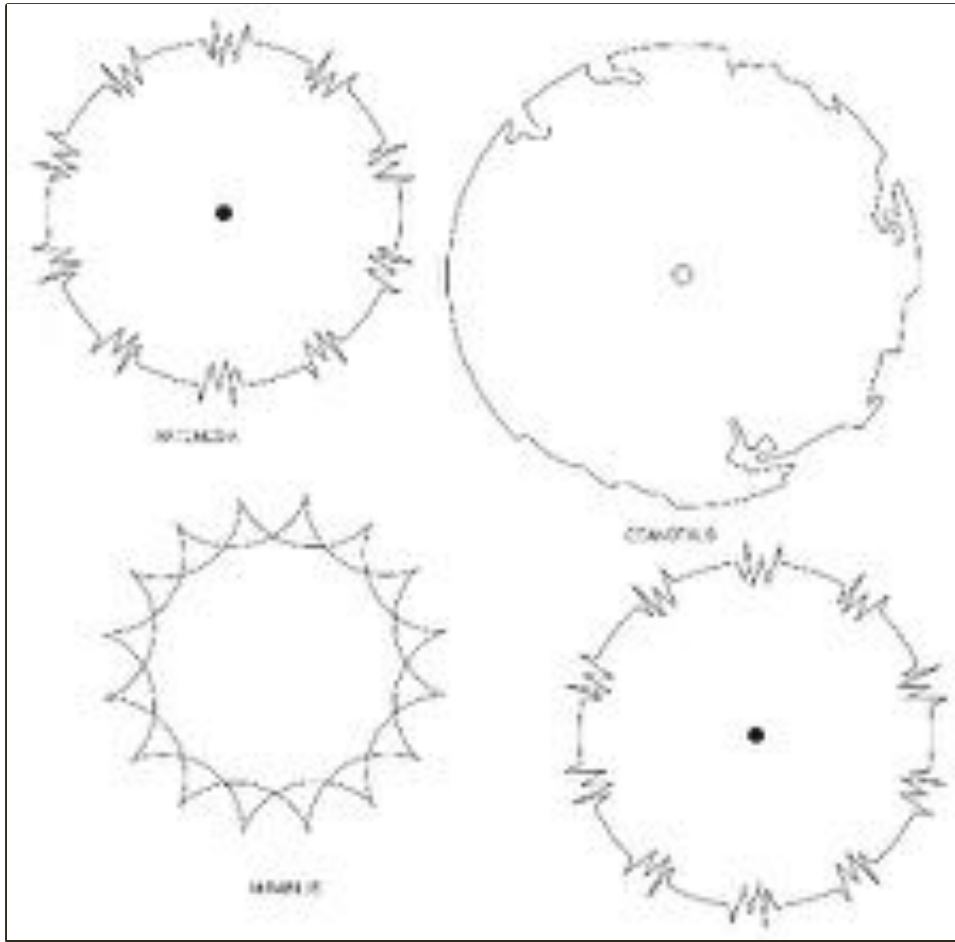
Baccharis Palette

Baccharis piularis "Pigeon Point"
Eschscholzia californica
Melica imperfecta
Adenostoma



Grassy Palette

Sisyrrinchium Bellum
Melica Imperfecta
Stipa Lepida

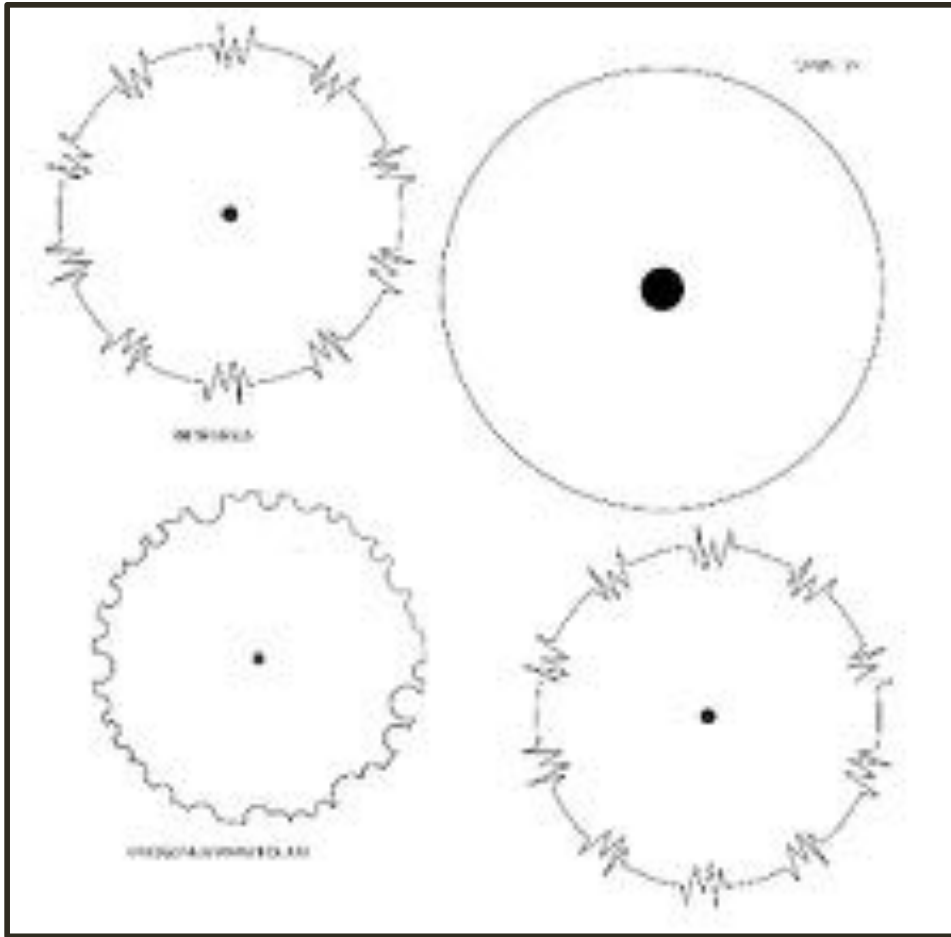


Artemesia Palette

Artemesia Californica

Ceanothus Centennial

Mirabilis Laevis Var Crassifolia



Opuntia Palette

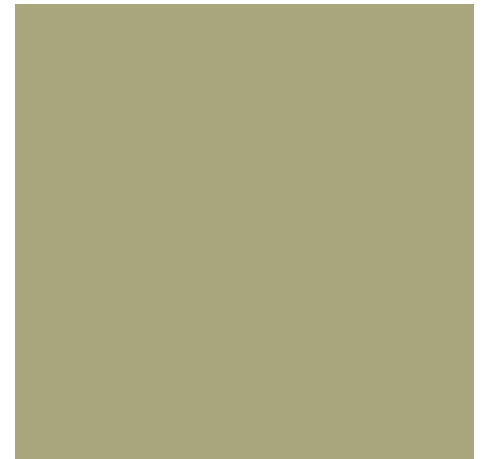
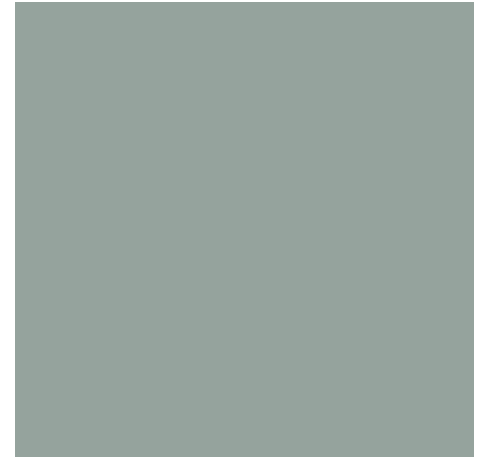
Opuntia Oricola

Artemesia Californica "Canyon Gray"

Eriogonum Parvifolium

Irrigation Concept





+ CONCLUSION

Based on experience with the BLB Pilot, this habitat expansion refines community expectation.

It features a simplified lower growing plant palette and easy care techniques for hand watering, weeding and mulching. Please take a walk at the pilot site and enjoy the natural beauty of our neighborhood.

Thank you for considering this application.